

# Next generation white metal technology

Improving applications across the land based and marine industry

## PRODUCT DATASHEET

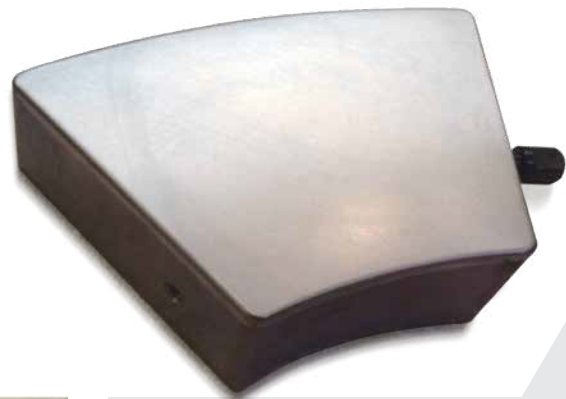


As world leaders in advanced white metal technology and with more than 40 years of experience, Wärtsilä can repair and upgrade any specifications of white metal bearings and pads for a vast range of industrial applications, using the most advanced technology in the industry.

### Design, repair and upgrade services

Wärtsilä's services and capabilities are on a global scale and provide design, repair and upgrades for white metal bearings in the following industries:

- Marine
- Mining
- Oil and Gas
- Compressors
- Steam power
- Pulp and paper
- Nuclearpower
- Hydro power



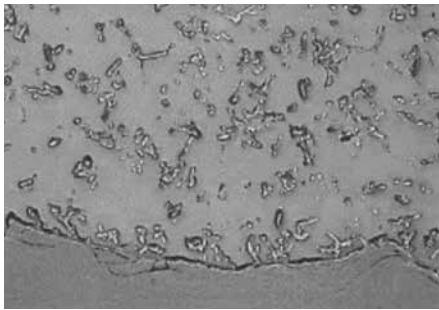
### APPLICATIONS LIST

Our 100Bond® white metal technology increases the performance and lifetime of applications, while minimising downtime.

- Generator bearings
- Vertical bearings
- Thrust pads
- Gearboxes
- Stone crushers, grinders and mills.

Improved performance. Longer lifetimes. Minimal downtime.

FEATURES	ADVANTAGES	BENEFITS
Cutting-edge white metal laser technology.	Suitable for many white metals across the industry to make a real technological difference.	Improves mechanical and tribological properties.
Refined microstructure.	Exceptional bonding strength in the upper range as standard.	Lowers chance of premature component failure and minimizes operational risk.
Fully tested and proven.	Test results show the white metal capable of withstanding <b>fatigue</b> stress.	Improvements of up to 40% in mechanical bonding and fatigue resistance compared to regular casting procedures.
Environmentally, friendly, sustainable solution.	Rapid service from Wärtsilä, delivering improved results.	Adheres to environmental regulations.



200µm

Standard procedure



200µm

100Bond® White Metal Technology

TECHNICAL SPECIFICATION

Characteristics	Traditional	100Bond® White Metal Technology
Hardness	22 27	HBW 10/250/180 at 20°C
<b>Qualification Bonding</b>	> 62 MPa	> 120 MPa
Mechanical properties	★★★	★★★★★
Tribological properties	★★★★★	★★★★★
Repeatability	★★★	★★★★★
Microstructure	Coarse	Very Refined

An industry leader in shaft line components Wärtsilä Shaft Line Solutions delivers a portfolio of end-to-end services and integrated solutions for the marine markets that builds on our core values: lifecycle efficiency, risk reduction, environmental leadership and design excellence. As an original equipment manufacturer operating in 75 countries, we have the capabilities to support customers on a global scale, and remain committed to providing in-country and round-the-clock expertise.



**The Bearing Center**

[wartsila.com/shaft-line-solutions](http://wartsila.com/shaft-line-solutions)

WÄRTSILÄ® is a registered trademark. Copyright © 2020 Wärtsilä Corporation. Specifications are subject to change without prior notice. 07 / 2020