

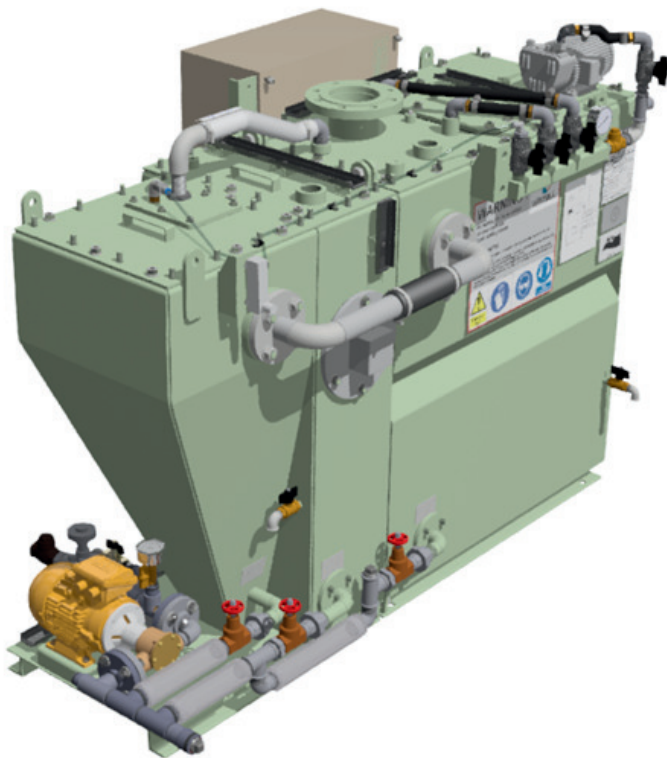
Super Trident sewage treatment plant

STC0-23

PRODUCT LEAFLET



Wärtsilä is the world's leading manufacturer of marine sewage treatment systems. For over four decades the Wärtsilä Hamworthy Super Trident sewage treatment plant has been widely regarded as standard specification on all types of vessels. They provide a safe and cost-effective solution for waste disposal at sea, ensuring that our oceans are protected and regulations are met.



The small ST0-23 sewage treatment plants are our most compact design yet, and they are created to work seamlessly with both gravity and vacuum collection systems, and utilizes the activated sludge system, which speeds up natural biological processes. Chemical chlorination and dichlorination are employed to ensure that the effluent is clean and safe to discharge overboard.

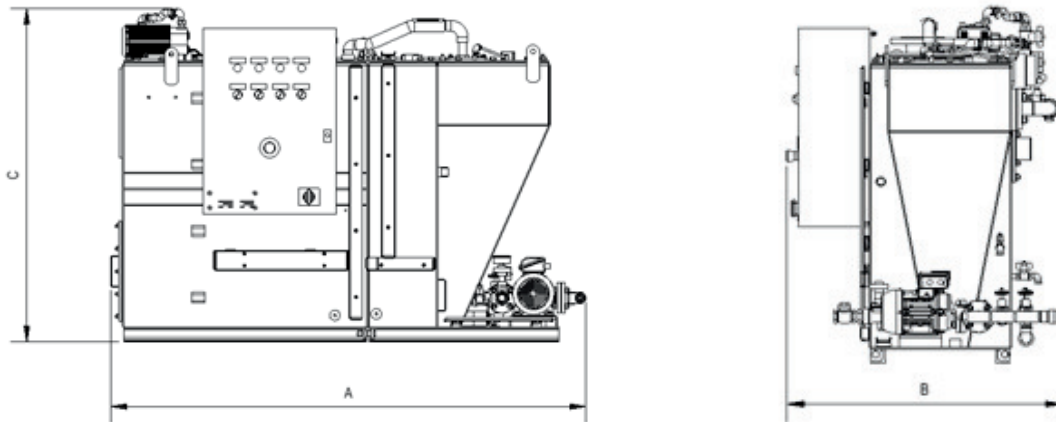
STANDARD FEATURES

- It can be split into two tanks for retrofit installations
- Single power supply input point
- Minimal maintenance requirement
- Solids handling centrifugal discharge pump
- Chemical disinfection and dichlorination
- Automatic control
- Compact design

OPTIONAL FEATURES

- Fitted vacuum sewage collection equipment
- Conditioning water flow meter
- Standby blower (mounted)
- Standby discharge pump (loose)
- Maceration
- Separate sewage feed system
- Retrofit options available to aid installation

Fig.1 Detailed elevation drawings



SEWAGE PLANT TYPE	ORGANIC LOADING RATE BOD(5) (KG/24HRS)	HYDRAULIC LOADING RATE (LIT/24HRS)
STC0-23	0.660	1,030

WEIGHTS & DIMENSIONS

MODEL NO.	DIMENSIONS (MM)			WEIGHT FULL (KG)
	A	B	C	
STC0-23	1780	937	1254	1100

DETAILED SPECIFICATION

MAIN TANK

The main tank is split into 2 separate tanks: Aeration Tank and Settling/Contact Tank. All air pipework and tank connections are supplied as standard.

CHLORINATION AND DECHLORINATION

Separate dosing systems for chlorination and dechlorination each include a solenoid-diaphragm dosing pump and a chemical container, all mounted, piped and wired to sewage treatment plant.

ELECTRICAL CONTROL PANEL

The electrical controls are housed in a steel enclosure to IP55 standards. The door of the control cabinet is fitted with a triple pole interlocked isolator. A volt free contact is provided for connection to the ship's main control panel or to any indicators or alarms.

DISCHARGE PUMP

One or more discharge pumps (duty/stand-by) can be supplied. These are also suitable for routine desludging.

